


# driade

## **ROLY POLY** *by Faye Toogood*



## **CAMPIONARIO TESSUTI-PELLI/ FABRIC-LEATHER SAMPLES**

 **N.B.:** From June 25, 2021, all upholstered seating furniture imported or sold in the United States must comply with the flammability test specified by California Technical Bulletin 117-2013 (aka "SOFFA"). This solution is compatible only with fabrics and/or materials that contains a minimum of 75% of natural fibers. The following are the only fabrics suitable among those in our current range: Barcellona, Cairo, Cipro outdoor, Delhi, Lisbona, Santorini outdoor.

CAT.A

026 COTONE CAIRO - COTTON CAIRO

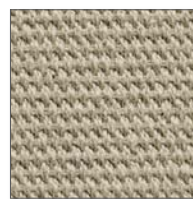
Composizione/Composition: 91% CO, 9% PL. Larghezza/Width: 140 cm. Peso/Weight: 690gr. Abrasione/Abrasion: 25.000 Martindale



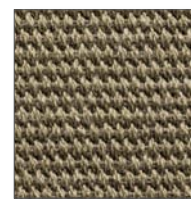
002  
BIANCO  
WHITE



004  
AVORIO  
IVORY



011  
SABBIA  
SAND



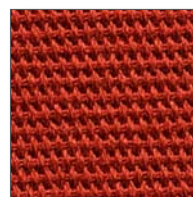
016  
TORTORA  
TAUPE



024  
ROSA  
PINK



019  
GIALLO OCRA  
OCHRE YELLOW



039  
ROSSO  
RED



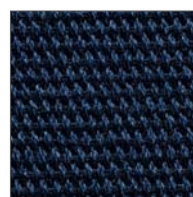
040  
BORDEAUX  
BURGUNDY



062  
VERDE CHIARO  
LIGHT GREEN



061  
AZZURRO INDACO  
INDIGO BLUE



072  
BLU  
BLUE



041  
GRIGIO GHIACCIO  
ICE GREY



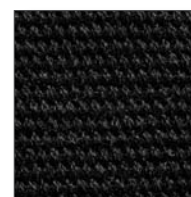
045  
GRIGIO CHIARO  
LIGHT GREY



048  
GRIGIO AZZURRO  
BLUE GREY



050  
GRIGIO SCURO  
DARK GREY



091  
NERO  
BLACK

I colori sono indicativi. Per la scelta dei tessuti e delle pelli si prega di consultare il campionario fisico.  
Colours are indicative. Please consult the physical sample book for the choice of fabrics and leathers.

CAT.A

027 COTONE DELHI - COTTON DELHI

Composizione/Composition: 100% CO. Larghezza/Width: 138/140 cm. Peso/Weight: 390gr. Abrasione/Abrasion: 100.000 Martindale



002  
BIANCO  
WHITE



004  
AVORIO  
IVORY



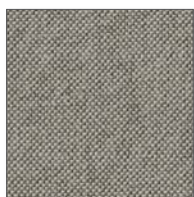
039  
ROSSO  
RED



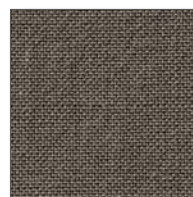
040  
BORDEAUX  
BURGUNDY



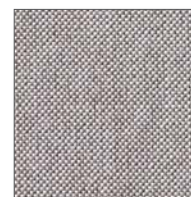
075  
BLU NAVY  
NAVY BLUE



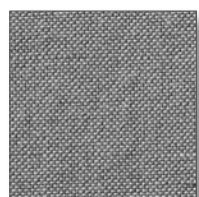
011  
SABBIA  
SAND



081  
MARRONE  
BROWN



047  
GRIGIO MELANGE  
MELANGE GREY



044  
GRIGIO  
GREY

I colori sono indicativi. Per la scelta dei tessuti e delle pelli si prega di consultare il campionario fisico.  
Colours are indicative. Please consult the physical sample book for the choice of fabrics and leathers.

CAT.B

029 MISTO VISCOSA PARANA' - VISCOSE MIX PARANA'

Composizione/Composition: 45% VI, 22% LI, 20% CO, 10% PC, 3% Altre Fibre/Other Fibres. Larghezza/Width: 140 cm. Peso/Weight: 700gr. Abrasione/Abrasion: 25.000 Martindale



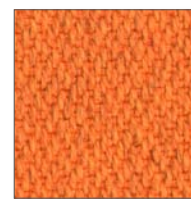
002  
BIANCO  
WHITE



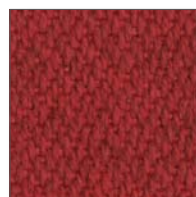
004  
AVORIO  
IVORY



015  
BEIGE  
BEIGE



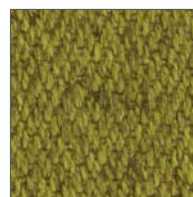
033  
ARANCIO  
ORANGE



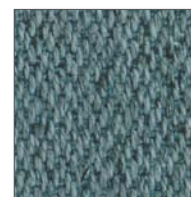
039  
ROSSO  
RED



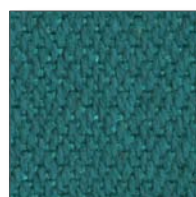
040  
BORDEAUX  
BURGUNDY



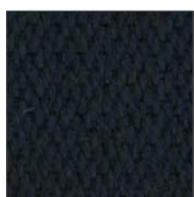
063  
VERDE  
GREEN



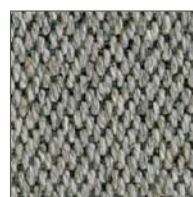
060  
AZZURRO  
LIGHT BLUE



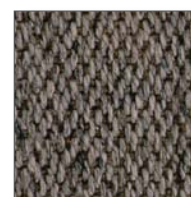
069  
PETROLIO  
PETROL GREEN



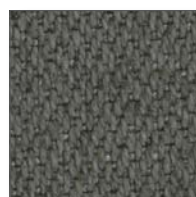
072  
BLU  
BLUE



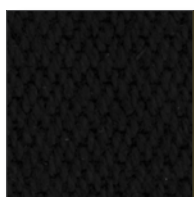
045  
GRIGIO CHIARO  
LIGHT GREY



016  
TORTORA  
TAUPE



044  
GRIGIO  
GREY



091  
NERO  
BLACK

I colori sono indicativi. Per la scelta dei tessuti e delle pelli si prega di consultare il campionario fisico.  
Colours are indicative. Please consult the physical sample book for the choice of fabrics and leathers.



CAT.B

031 MISTO VISCOSA OSLO - *VISCOSE MIX OSLO*

Composizione/Composition: 67% VI, 33% LI. Larghezza/Width: 138/140 cm. Peso/Weight: 810gr. Abrasione/Abrasion: 20.000 Martindale



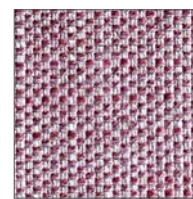
002  
BIANCO  
*WHITE*



004  
AVORIO  
*IVORY*



011  
SABBIA  
*SAND*



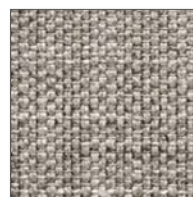
024  
ROSA  
*PINK*



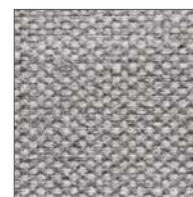
063  
VERDE  
*GREEN*



060  
AZZURRO  
*LIGHT BLUE*



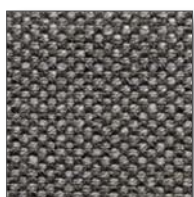
081  
MARRONE  
*BROWN*



051  
GRIGIO PERLA  
*PEARL GREY*



044  
GRIGIO  
*GREY*



050  
GRIGIO SCURO  
*DARK GREY*

I colori sono indicativi. Per la scelta dei tessuti e delle pelli si prega di consultare il campionario fisico.  
*Colours are indicative. Please consult the physical sample book for the choice of fabrics and leathers.*

CAT.B

**033 MISTO COTONE CHENGDU - COTTON MIX CHENGDU**

Composizione/Composition: 80% CO, 20% PL. Larghezza/Width: 140 cm. Peso/Weight: 585gr./mq; 820 gr./ml. Abrasione/Abrasion: 25.000 Martindale



004  
AVORIO  
IVORY



080  
MARRONE CHIARO  
LIGHT BROWN



081  
MARRONE  
BROWN



045  
GRIGIO CHIARO  
LIGHT GREY



083  
MARRONE SCURO  
DARK BROWN



050  
GRIGIO SCURO  
DARK GREY

I colori sono indicativi. Per la scelta dei tessuti e delle pelli si prega di consultare il campionario fisico.  
Colours are indicative. Please consult the physical sample book for the choice of fabrics and leathers.

CAT.C

036 MISTO LINO LISBONA - LINEN MIX LISBONA

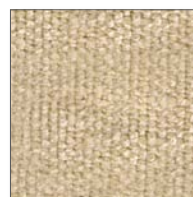
Composizione/Composition: 72% LI, 14% CO, 14% VI. Larghezza/Width: 140 cm. Peso/Weight: 735gr./mq.



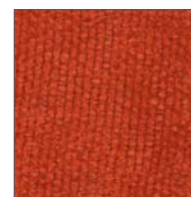
002  
BIANCO  
WHITE



011  
SABBIA  
SAND



078  
NOCCIOLA  
HAZEL



136  
ROSSO CORALLO  
CORAL RED



040  
BORDEAUX  
BURGUNDY



066  
VERDE SCURO  
DARK GREEN



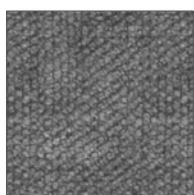
060  
AZZURRO  
LIGHT BLUE



081  
MARRONE  
BROWN



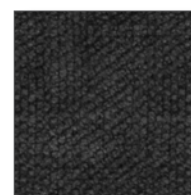
083  
MARRONE SCURO  
DARK BROWN



045  
GRIGIO CHIARO  
LIGHT GREY



050  
GRIGIO SCURO  
DARK GREY



091  
NERO  
BLACK

I colori sono indicativi. Per la scelta dei tessuti e delle pelli si prega di consultare il campionario fisico.  
Colours are indicative. Please consult the physical sample book for the choice of fabrics and leathers.

CAT.C

040 LINO BARCELLONA - *LINEN BARCELLONA*

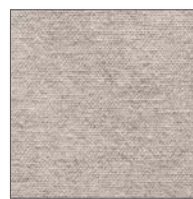
Composizione/Composition: 100% L.I. Larghezza/Width: 138/140 cm. Peso/Weight: 680gr. Abrasione/Abrasion: 30.000 Martindale



002  
BIANCO  
*WHITE*



005  
CREMA  
*CREAM*



011  
SABBIA  
*SAND*



012  
SABBIA SCURO  
*DARK SAND*



020  
GIALLO SENAPE  
*MUSTARD YELLOW*



033  
ARANCIO  
*ORANGE*



039  
ROSSO  
*RED*



036  
ROSSO ANTICO  
*ANTIQUE RED*



062  
VERDE CHIARO  
*LIGHT GREEN*



067  
VERDE SALVIA  
*SAGE GREEN*



066  
VERDE SCURO  
*DARK GREEN*



070  
BLU CHIARO  
*LIGHT BLUE*



072  
BLU  
*BLUE*



080  
MARRONE CHIARO  
*LIGHT BROWN*



081  
MARRONE  
*BROWN*



083  
MARRONE SCURO  
*DARK BROWN*



044  
GRIGIO  
*GREY*



050  
GRIGIO SCURO  
*DARK GREY*

I colori sono indicativi. Per la scelta dei tessuti e delle pelli si prega di consultare il campionario fisico.  
Colours are indicative. Please consult the physical sample book for the choice of fabrics and leathers.



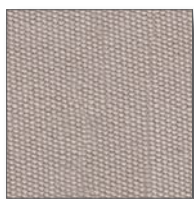
CAT.B

034 ACRILICO OUTDOOR CIPRO - *ACRYLIC OUTDOOR CIPRO*

Composizione/Composition: 100% PC Outdoor. Larghezza/Width: 152 cm. Peso/Weight: 270gr./mq. Abrasione/Abrasion: 25.000 Martindale



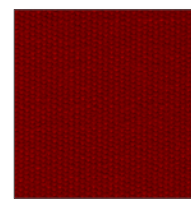
002  
BIANCO  
*WHITE*



011  
SABBIA  
*SAND*



024  
ROSA  
*PINK*



039  
ROSSO  
*RED*



018  
GIALLO CHIARO  
*LIGHT YELLOW*



063  
VERDE  
*GREEN*



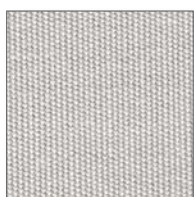
066  
VERDE SCURO  
*DARK GREEN*



060  
AZZURRO  
*LIGHT BLUE*



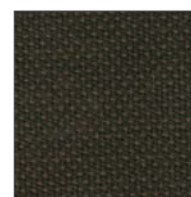
072  
BLU  
*BLUE*



045  
GRIGIO CHIARO  
*LIGHT GREY*



044  
GRIGIO  
*GREY*



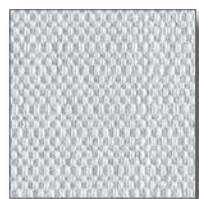
083  
MARRONE SCURO  
*DARK BROWN*

I colori sono indicativi. Per la scelta dei tessuti e delle pelli si prega di consultare il campionario fisico.  
*Colours are indicative. Please consult the physical sample book for the choice of fabrics and leathers.*

CAT.B

035 ACRILICO OUTDOOR SANTORINI - *ACRYLIC OUTDOOR SANTORINI*

Composizione/Composition: 100% PC Outdoor. Larghezza/Width: 152 cm. Peso/Weight: 270gr./mq.



002  
BIANCO  
*WHITE*



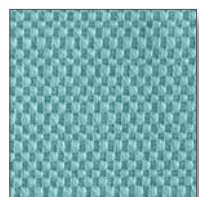
009  
ECRU'  
*ECRU*



018  
GIALLO CHIARO  
*LIGHT YELLOW*



033  
ARANCIO  
*ORANGE*



E19  
AZZURRO MARE  
*BLUE SEA*



091  
NERO  
*BLACK*

I colori sono indicativi. Per la scelta dei tessuti e delle pelli si prega di consultare il campionario fisico.  
*Colours are indicative. Please consult the physical sample book for the choice of fabrics and leathers.*